




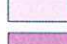




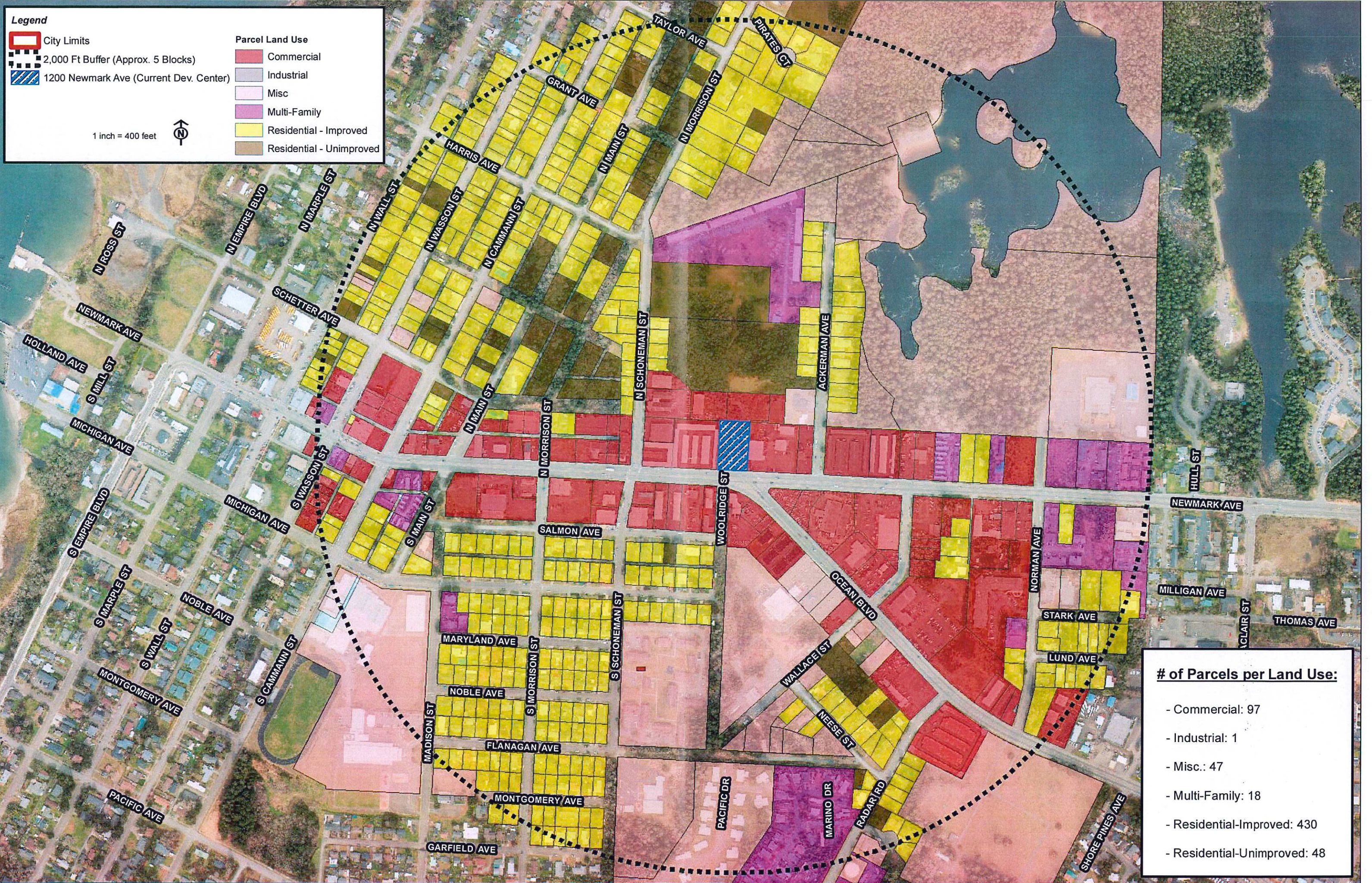


Legend

 City Limits
 2,000 Ft Buffer (Approx. 5 Blocks)
 1200 Newmark Ave (Current Dev. Center)

Parcel Land Use
 Commercial
 Industrial
 Misc
 Multi-Family
 Residential - Improved
 Residential - Unimproved




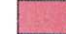


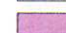
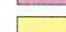
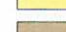
1 inch = 400 feet 



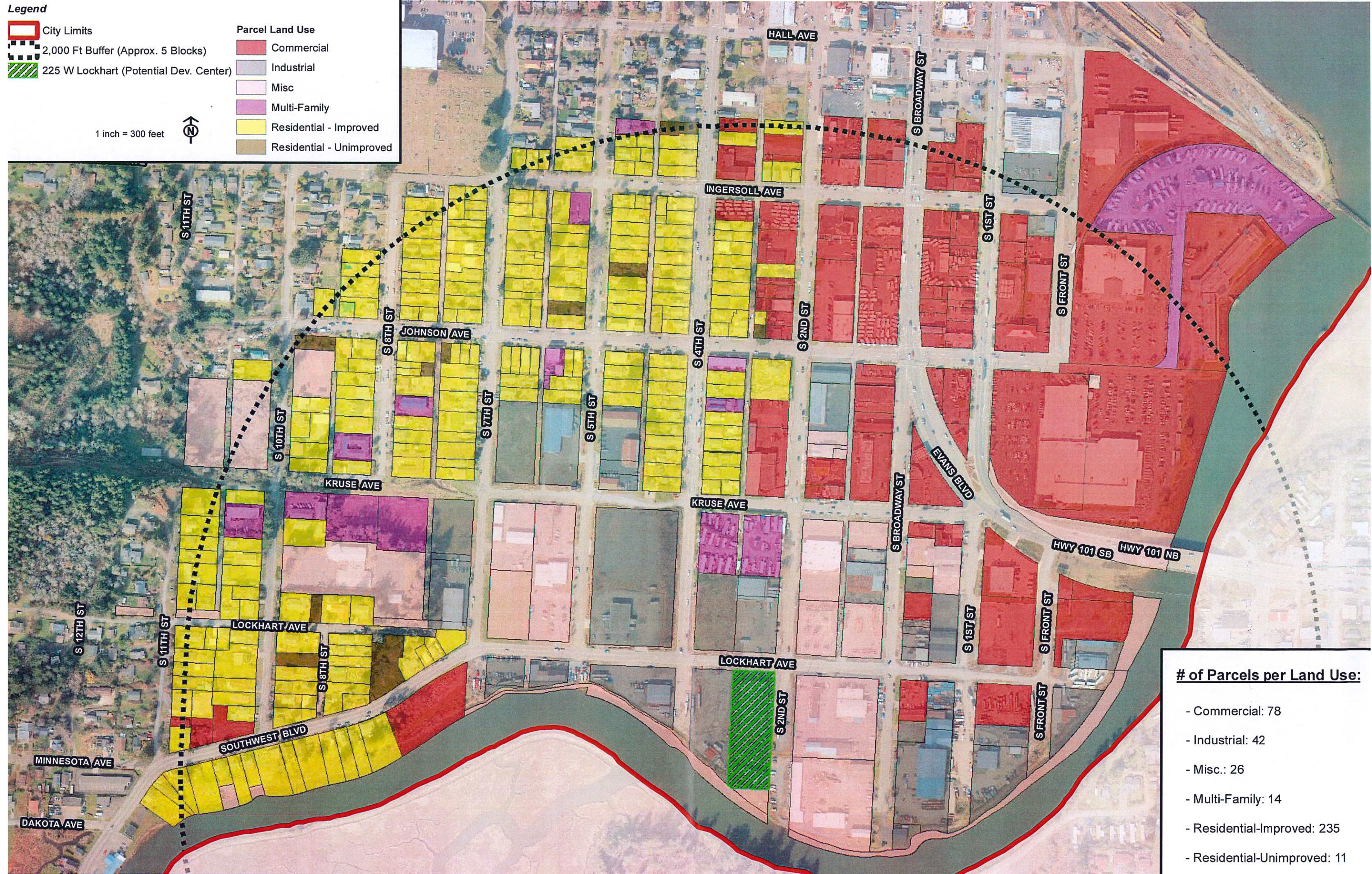
of Parcels per Land Use:

- Commercial: 97
- Industrial: 1
- Misc.: 47
- Multi-Family: 18
- Residential-Improved: 430
- Residential-Unimproved: 48

Legend

-  City Limits
-  2,000 Ft Buffer (Approx. 5 Blocks)
-  225 W Lockhart (Potential Dev. Center)
-  Commercial
-  Industrial
-  Misc
-  Multi-Family
-  Residential - Improved
-  Residential - Unimproved

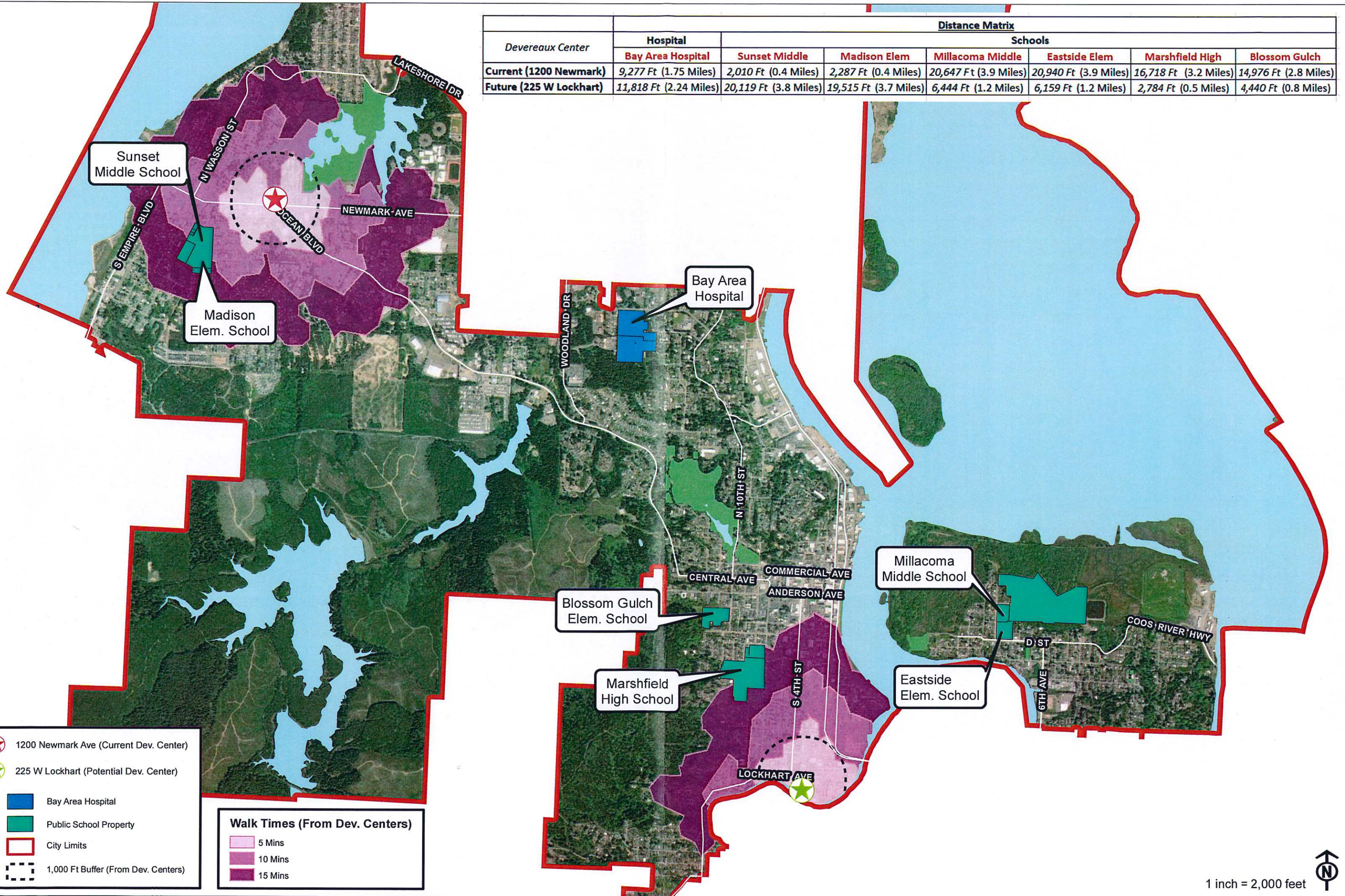
1 inch = 300 feet



of Parcels per Land Use:

- Commercial:	78
- Industrial:	42
- Misc.:	26
- Multi-Family:	14
- Residential-Improved:	235
- Residential-Unimproved:	11

Devereaux Center	Distance Matrix						
	Hospital	Schools					
	Bay Area Hospital	Sunset Middle	Madison Elem	Millacoma Middle	Eastside Elem	Marshfield High	Blossom Gulch
Current (1200 Newmark)	9,277 Ft (1.75 Miles)	2,010 Ft (0.4 Miles)	2,287 Ft (0.4 Miles)	20,647 Ft (3.9 Miles)	20,940 Ft (3.9 Miles)	16,718 Ft (3.2 Miles)	14,976 Ft (2.8 Miles)
Future (225 W Lockhart)	11,818 Ft (2.24 Miles)	20,119 Ft (3.8 Miles)	19,515 Ft (3.7 Miles)	6,444 Ft (1.2 Miles)	6,159 Ft (1.2 Miles)	2,784 Ft (0.5 Miles)	4,440 Ft (0.8 Miles)



- 1200 Newmark Ave (Current Dev. Center)
- 225 W Lockhart (Potential Dev. Center)
- Bay Area Hospital
- Public School Property
- City Limits
- 1,000 Ft Buffer (From Dev. Centers)

Walk Times (From Dev. Centers)

- 5 Mins
- 10 Mins
- 15 Mins