

Coos Bay Estuary Management Plan & Implementing Ordinances Revisions



UNIVERSITY OF
OREGON

Institute for Policy
Research and Engagement



Presentation Agenda



CBEMP Update Process



Recommendations



Questions & Answers



CBEMP Update Process

Goal:

Evaluate the needs of the local governments and the community for the Coos Bay Estuary Management Plan.

Process:

Work began in 2015, with Partnership for Coastal Watersheds, including Coos County, City of Coos Bay, North Bend and Port of Coos Bay staff, working with UO- IPRE (as consultant).

Public input through Public Meetings and Public Open House (2016-2019).

Map Atlas and recommendations for revised CBEMP presented to jurisdictions in 2019.

Reengaged after COVID to pursue adoption of Minor Revisions to CBEMP to meet current legal requirements, adopt digital maps, and align all three implementing jurisdictions under same standards.



CBEMP Update

Current Proposal: Recommend minimum necessary to adopt digital maps and re-align plan in **three** categories of improvements:

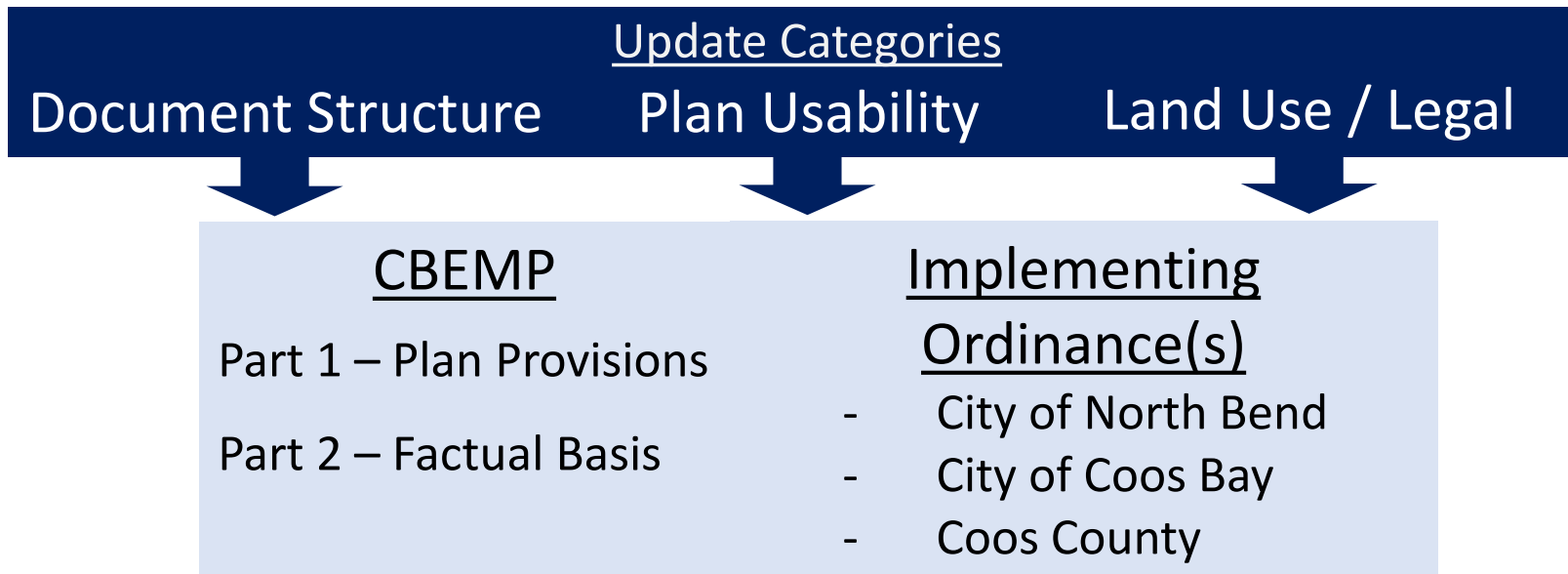
- 1) Document Structure
- 2) Plan Usability
- 3) Land Use / Legal

Future Phase: Recommend comprehensive revision of CBEMP through extensive public process to better integrate updated scientific and community information.



CBEMP Update

Revision Process





Recommendations



CBEMP Vol. II,
Part 1 Update



CBEMP Vol. II,
Part 2 Update



Implementing
Ordinance(s)
Update



CBEMP Vol. II, Part 1 Update



CBEMP Vol. II, Part 1

Part 1 contains the **PLAN PROVISIONS**.

Section 1: Plan's History, Relationship to Other Plans, and How to Use

Section 2: How plan shall be implemented, revised, and amended

Section 3: Definitions and Policy

Section 4: Coastal Shorelands Boundary

Section 5: 144 Management Units

Section 6: Dredged Materials Disposal (DMD) Plan

Section 7: Restoration Plan



Part 1 | Document Structure

- 1) Digitize and Hyperlink the CBEMP.
 - a) Combined into one document, from 7 separate documents.
 - b) Added (minimal) internal hyperlinks connecting plan sections.
 - c) Digitized mylar maps used for project review.

- 2) Explain the purpose and contents of each document section.
 - a) Inserted purpose statements and table of contents to each section.
 - b) Created diagrams to assist content clarity.

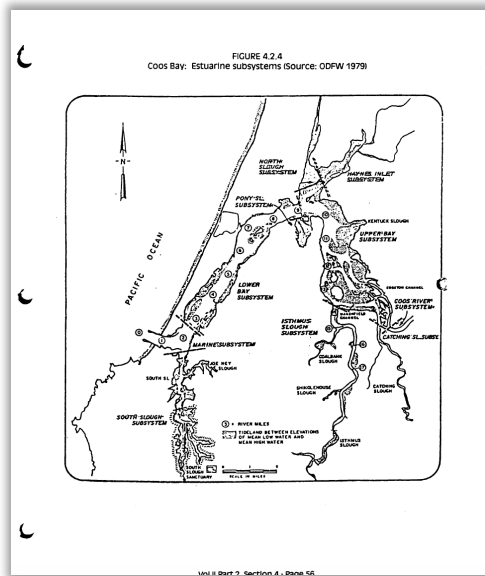
The screenshot shows a document page with a legend at the top left: a yellow square for 'Internal Hyperlink' and a blue square for 'External Hyperlink'. The main heading is 'SECTION 1. INTRODUCTION'. Below it is a purpose statement: 'PURPOSE: This section provides: (1) a summary of the Plan's history, (2) how the Plan interrelates with other comprehensive plans, (3) and how to use the document to understand management decisions presented within it.' This is followed by a 'Table of Contents' section with the following items and page numbers: 1.1 General Introduction (2), 1.2 Authority, Purpose, and Scope (3), 1.3 Historical Perspective (8), 1.4 Development of Implementing Measures (10), 1.5 Citizen Involvement Program (10), 1.6 Agency Involvement and Coordination (11), and 1.7 How to use this Plan (11). At the bottom right, it says 'Volume II Part 1 | Section 1 | Page 1' and includes a blue hyperlink 'Return to Top of Document'.

Example Section Purpose Statements and Table of Contents

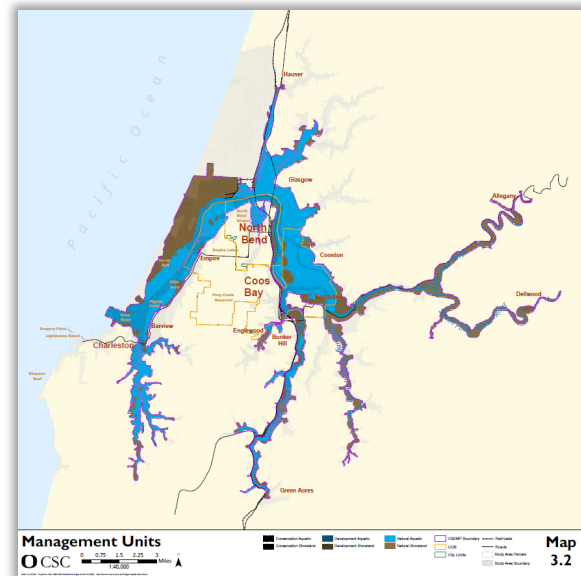


Part 1 | Plan Usability

- 1) Integrate Map Atlas and Data Source into CBEMP.
 - a) Updated references to maps to reflect newly digitized maps and background maps in Map Atlas (Part 2).
 - b) Removed Policy #3/Special Considerations Map.



Vol. 2 Pt. II. Map (1979)



Map Atlas (2018)

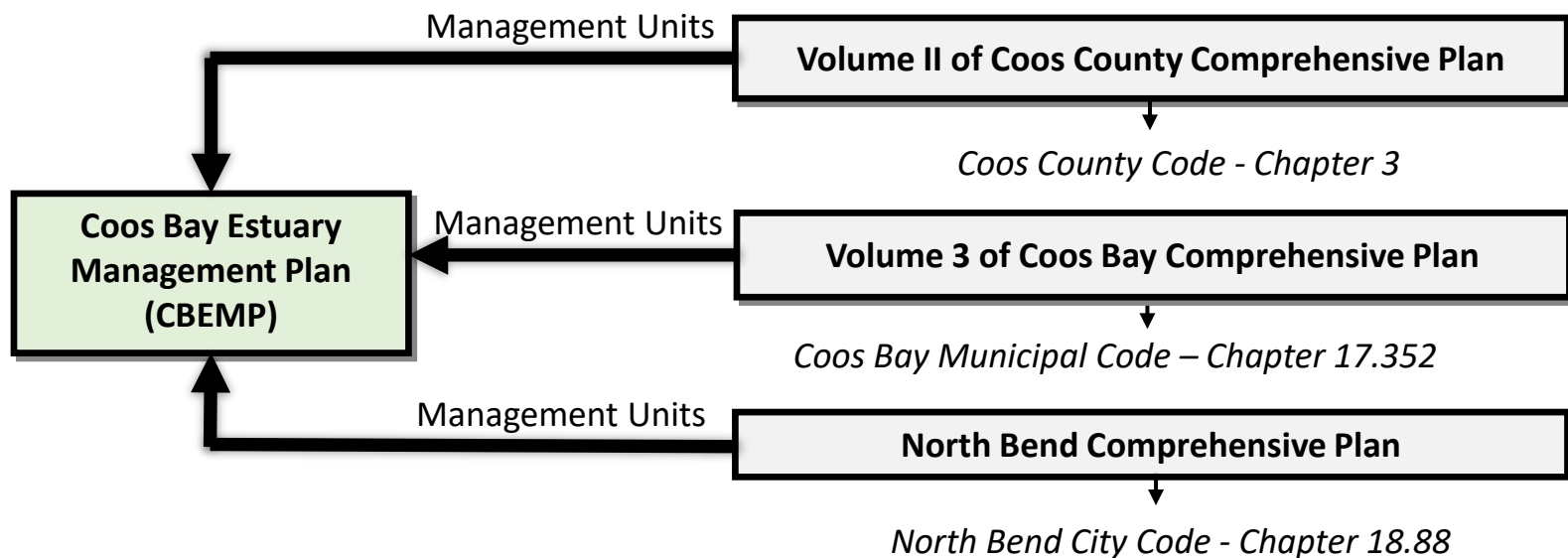


Part 1 | Plan Usability

2) Include all Management Units in the CBEMP.

- a) All management units (County, Coos Bay, and North Bend) were reinserted into Part 1, Section 5 of the CBEMP.
- b) Resolved conflicts between management units.

NOTE: NO CHANGES ARE PROPOSED TO MANAGEMENT UNIT BOUNDARIES.





Part 1 | Plan Usability

Management Units Reinserted Into the CBEMP, By Jurisdiction

Coos Bay Units		North Bend Units
15-NA	28A-DA	44-UW
16-CA	28B-DA	44-UNW
17-CA	28-D/UW	46-DA
18B-CA	38-CA	46-UD
20-CA	42-UD	47-DA
21-RS	43-DA	47-UW
21-CA	43-UW	48-CA
21A-NA	44-DA	48-CS
23-DA	44a-UW	48A-CA
23A-UW	44b-UD	50-UD
23B-UD	45-CS	50-NA
24-NA	45A-CA	51-UD
24-CS	45-NA	51-CA
25-NA	52-CS	52-NA
26-UD	52A-DA	53-CS
26A-CA	53-CA	
26B-CA	54-DA	
27-DA	54-UW	
27-UW	55-UD	



Part 1 | Plan Usability

Conflict Resolution between Management Units

Management Unit	Jurisdictional Conflict	Differences	Recommendation
CMRSDNC-DA	Coos Bay / County		County
DDNC-DA	Coos Bay / County	35' Draft vs. 37' Draft	County
ISSDNC-DA	Coos Bay / County	Entire	County
44-DA	Coos Bay / North Bend	Activity 12	North Bend
44-UW	Coos Bay / North Bend	Entire	North Bend
45A-CA	Coos Bay / County	Boundary/UA/Conditions	County
52-NA	Coos Bay / North Bend	Obj./UA/Conditions	North Bend/ (Coos Bay Update)
53-CS	Coos Bay / North Bend	Restoration: Active	North Bend
55B-NA	Coos Bay / County	Entire	County



Part 1 | Plan Usability

3) Include all Policies in the CBEMP.

- a) Reinsert City of Coos Bay-only policies into County-wide CBEMP.

Coos Bay Policies:

#45 Commercial Clam Harvest

#71 East Catching Slough Road Widening Project



Part 1 | Land Use/Legal Framework

- 1) Recommend policies to maintain and update multi-jurisdictional CBEMP.
 - a) Amend existing Citizen Involvement policies (2.4 and Bay-wide policy #39) to recognize need for diverse citizen involvement and multi-jurisdictional coordination.
 - b) Recommend Joint Citizen Advisory Committee to be appointed by Coos County, Coos Bay, & North Bend and include representatives from Tribes and Port.
 - c) Recommend changes to Policy #36 for Phase 2/Plan Updates -- including review of new/updated science and economic information with potential modifications to management units and expanded public involvement.





Part 1 | Land Use/Legal Framework

- 2) Fix “scrivener's errors” throughout document
 - a) Correct spelling errors, typos, subject-verb, etc. mistakes in document.
 - b) Update Local, State, and Federal Agency titles as appropriate. Update permit names as necessary to reflect current processes.
 - c) Amend references to OAR, ORS, and other state and federal laws/regulations to reflect current status.

Examples:

Division of State Lands =>
Department of State Lands

Department of Human Resources
=> Oregon Health Authority



Part 1 | Land Use/Legal Framework

- 3) Include a comprehensive list of definitions
 - a) Continue to include comprehensive list of definitions in CBEMP (for use by all three jurisdictions).
 - b) Amend definitions as necessary to meet current state and federal regulations.

Amended
Definitions:

Floodway

Restoration

Shoreline

Solid Waste Disposal



CBEMP Vol. II, Part 2

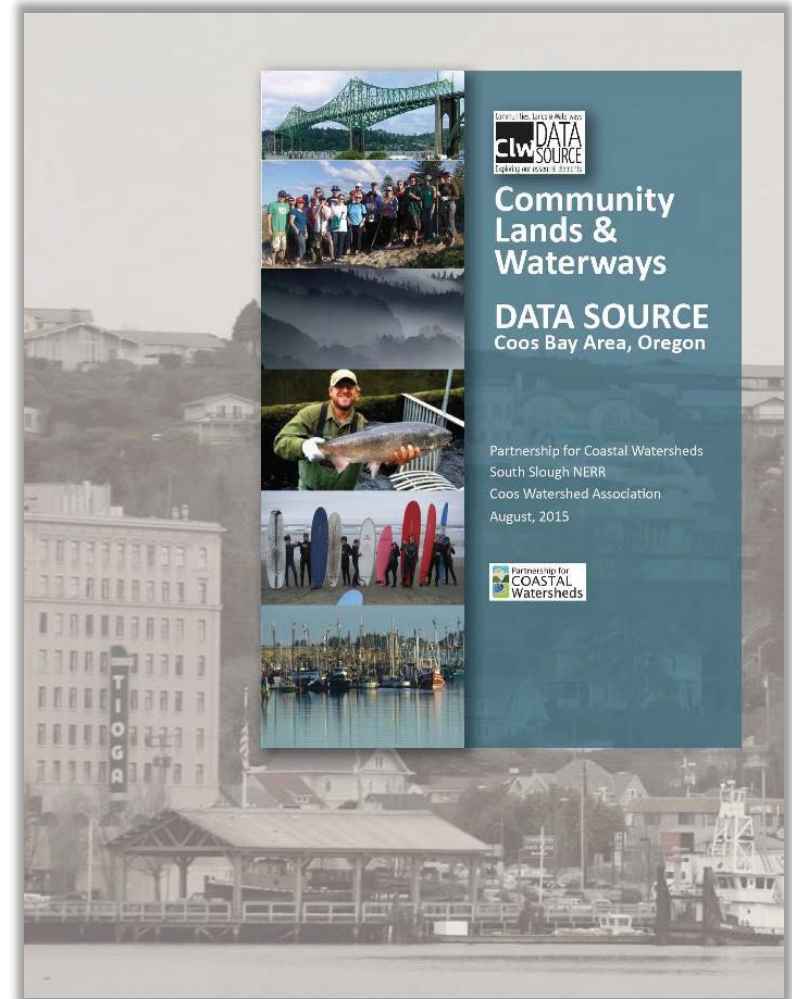


CBEMP Vol. II, Part 2

Part 2 of the contains factual basis and inventories.

Edited and supplemented by:

- Data Source
- Map Atlas



Data Source



Part 2 Update

Types of Changes

1. Goal Compliance

- Identification of future Data Source Needs
- Section 2 – Coastal Shorelands Boundary Identification and Findings
- Section 4 – Beaches and Dunes

2. Updated Background data/maps

- Data and Maps associated with setting, economic characteristics, and biological resources updated/replaced (including new digital maps with latest available information).
- Didn't change Special Element sections (moorage, dredged material disposal, or mitigation/restoration).

2. COASTAL SHORELAND BOUNDARY IDENTIFICATION AND FINDINGS

2.1 INTRODUCTION

Statewide Planning Goal #17 (Coastal Shorelands) defines "coastal shorelands" as "those areas immediately adjacent to the ocean, all estuaries and associated wetlands, and all coastal lakes." Goal #17 requires identification of shoreland areas in accordance with seven criteria. These criteria are applicable within the "Planning Area," which is an area for inventory and study, to determine the location of the "Coastal Shorelands Boundary".

2.2 "PLANNING AREA"

According to Goal #17, the "Planning Area" for the Coos Bay Estuary system encompasses the following area:

"all lands west of the Oregon Coast Highway" except "the lands west of a line formed by connecting the western boundaries of the following described roadways; Oregon State 240, Cape Arago Secondary (FA5263) southerly from its junction with the Oregon Coast Highway to Charleston;"

Also included to the east of Highway 101 and Cape Arago Highway are:

"all lands within an area defined by a line measured horizontally, 1,000 feet from the shoreline of estuaries" (Statewide Planning Goal #17). According to these criteria, the "Planning Area" extends a maximum of 1,000 ft. from the estuary shoreline in the entire upper bay (above McCullough Bridge), in the upper slough and riverine systems, and in South Slough above Charleston Bridge.

2.3 SHORELAND IDENTIFICATION CRITERIA AND BOUNDARY MAPS (Findings)

The seven criteria of Goal #17 and the way in which they were interpreted and applied are detailed below. The criteria are mapped in detail within the planning area on a set of maps at a scale of 1" = 800'. Property lines are shown on all maps. The head of tide for sloughs and rivers was determined by use of: (i) "Heads of Tide for Coastal Streams," Division of State Lands, and (ii) Coos County Planning Staff field surveys of tides on July 16 and 21, 1981 for those areas not surveyed by DSL. Working tides are deemed to be the effective head of tide, and therefore the furthest extent of the estuarine area, wherever they occur. It is recognized that many working tides are not completely water-tight, and limited saline intrusion often occurs upstream. However, upstream areas above tides are not considered estuarine, because of the lack of direct tidal influence.

Criterion #1 "Lands which limit, control, or are directly affected by the hydraulic action of the coastal water body, including floodways." These include:

- (a) Land subject to flooding by the estuarine portion of coastal rivers and sloughs. [Source: HUD Flood Hazard Boundary Maps]. Rivers are the Coos and the Millcoma. Sloughs are the following: North, Palouse, Larson, Kentuck, Willanch, Catching, Ross, Isthmus, Coalbank, Joe Ney and South.



Part 2 Update

VOLUME II, PART 2, TABLE OF CONTENTS

SECTION		Page
1	INTRODUCTION	
2	THE SETTING	Section 2 - 2
23	COASTAL SHORELANDS BOUNDARY IDENTIFICATION AND FINDINGS	Section 23 - 1
4	PHYSICAL CHARACTERISTICS AND BIOLOGICAL RESOURCES	Section 4 - 2
4.3	Coastal Shorelands "Values" Requiring Mandatory Protection	Section 34 - 741
4	Beaches and Dunes	Section 4 - 15
5	SOCIO-ECONOMIC RESOURCES AND CHARACTERISTICS	Section 5 - 2
56	SPECIAL MOORAGE ELEMENT	Section 56 - 1
67	SPECIAL DREDGED MATERIAL DISPOSAL ELEMENT	Section 67 --1
78	SPECIAL MITIGATION/RESTORATION ELEMENT	Section 87 --1
9	ANNOTATED BIBLIOGRAPHY	Section 9 - 1
8	Communities, Lands, & Waterways Data Source	Section 8 --1
9	Coos Estuary and Shoreland Atlas	Section 9 --1

Revisions Made



Part 2 Update

VOLUME II, PART 2, TABLE OF CONTENTS

SECTION		Page
1	INTRODUCTION	
2	COASTAL SHORELANDS BOUNDARY IDENTIFICATION AND FINDINGS	Section 2 - 1
3	Coastal Shorelands "Values" Requiring Mandatory Protection	Section 3 --1
4	Beaches and Dunes	Section 4 --1
5	SPECIAL MOORAGE ELEMENT	Section 5 --1
6	SPECIAL DREDGED MATERIAL DISPOSAL ELEMENT	Section 6 --1
7	SPECIAL MITIGATION/RESTORATION ELEMENT	Section 7 --1
8	Communities, Lands, & Waterways Data Source	Section 8 --1
9	Coos Estuary and Shoreland Atlas	Section 9 --1

Revised Content



Implementing Ordinance(s)



Implementing Ordinance(s)



Coos County Code, Chapter 3



City of Coos Bay Code, Volume 3



City of North Bend Code, Chapter 18.88



Implementing Ordinance(s) Plan Usability

1) Recommend using CBEMP as controlling document.

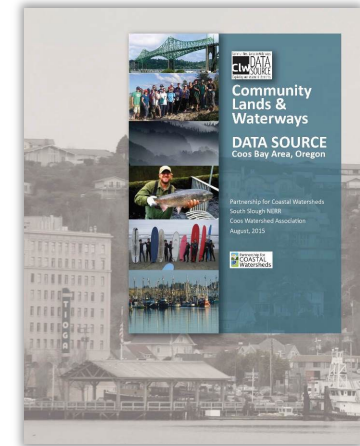
- Propose new language for Coos County, Coos Bay, and North Bend that references CBEMP directly as controlling document (rather than having own versions of document and/or management units within local code).

2) Relocated Management Units from the respective ordinances to the CBEMP.

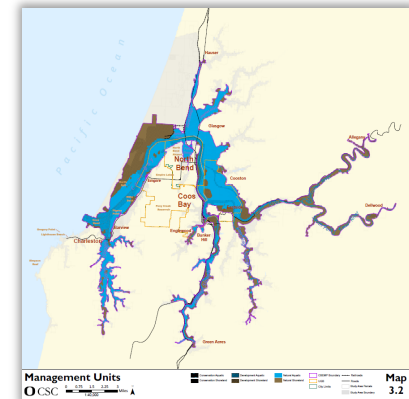
- As all management units are consolidated into the CBEMP, propose removal of Management Unit descriptions/listings from County, Coos Bay, and North Bend code.
- CBEMP denotes which jurisdiction holds the review authority for each management unit within the revised CBEMP.

3) Integrated Map Atlas and Data Source in CBEMP.

- References to prior data source or specific map(s) proposed to be replaced with Data Source and Map Atlas as appropriate.



Data Source



Map Atlas Example



CBEMP Adoption Schedule

January	Open House – January 7 th , 1-4pm, North Bend Community Center Agency meeting – PCW meeting, January 10
January-February	Agency Comments received by February 20
March-May	Extended public involvement period
May 1	Map overlay tool made available (DLCD and County website)
May 10	Open House – Coos Bay City Hall, 3:30-7:00pm
May 26	Public comments due (for inclusion in application submission)
July-August	Public hearings for Planning Commissions, Board of Commissioners and City Councils
September	Final adoption by the County Board of Commissioners and Appeal Deadline
October	Text and maps updated (if no appeal)



CBEMP Resources

The County's website contains links to current drafts of:

CBEMP Part 1 Revisions

CBEMP Part 2 Revisions

Coos County Atlas Maps

Digitized Mylar Maps

Goal 16 Linkage Matrix

Aquatic Uses & Activities Linkage Matrix

Goal 17 & 18 Linkage Matrix

Coos Estuary Land Use Analysis (Background)

www.co.coos.or.us/community-dev/page/am-22-005-coos-bay-estuary-management-plan



Plan, Maps,
Appendices

Background
Maps



Questions?